

Register your product and get support at  
[www.philips.com/welcome](http://www.philips.com/welcome)

AD7000W/12



---

EN User manual

---

**PHILIPS**



# Contents

---

<b>1</b>	<b>Important</b>	<b>4</b>
	Safety	4
	Notice	5

---

<b>2</b>	<b>Your Entertainment System</b>	<b>7</b>
	Introduction	7
	What's in the box	7
	What else you need	7
	Overview of the main unit	8
	Get started to use AirPlay	8

---

<b>3</b>	<b>Prepare</b>	<b>9</b>
	Connect power	9
	Turn AD7000W on	9

---

<b>4</b>	<b>Connect to your home Wi-Fi network for AirPlay</b>	<b>10</b>
	Scenario 1: Connect to a WPS router	10
	Scenario 2: Connect to a non-WPS router	11

---

<b>5</b>	<b>Play</b>	<b>17</b>
	Stream audio from your iTunes music library to AD7000W	17
	Control play	18
	Use advanced sound settings	18
	Play/charge your iPod/iPhone/iPad through USB socket	19
	Play from an external device	19

---

<b>6</b>	<b>Update firmware</b>	<b>20</b>
	Download the update file	20
	Update from the configuration page	20

---

<b>7</b>	<b>Product information</b>	<b>22</b>
	Specifications	22

---

<b>8</b>	<b>Troubleshooting</b>	<b>23</b>
----------	------------------------	-----------

# 1 Important

## Safety

Information for Europe:

Know these safety symbols



The 'exclamation mark' calls attention to features for which you should carefully read the supplied literature to prevent operating and maintenance problems.

The 'lightening bolt' symbol indicates uninsulated components within the product that can cause an electric shock.

To reduce the risk of fire or electric shock, do not expose the product to rain or moisture and do not place any objects filled with liquids, such as vases, on the product.

- ① Read these instructions.
- ② Keep these instructions.
- ③ Heed all warnings.
- ④ Follow all instructions.
- ⑤ Do not use this product near water.
- ⑥ Clean only with dry cloth.
- ⑦ Do not block any ventilation openings. Install in accordance with the manufacturer's instructions.

- ⑧ Do not remove the casing of this product.
- ⑨ Do not expose the product to dripping / splashing water, rain or high humidity.
- ⑩ Keep this product away from direct sunlight, naked flames or heat.
- ⑪ Do not install near any heat sources such as radiators, heat registers, stoves, or other electrical equipment (including amplifiers).
- ⑫ Do not place any other electrical equipment on the product.
- ⑬ Do not place any sources of danger on the product (e.g. objects containing liquids, burning candles).
- ⑭ This product may include batteries. Please refer to safety and disposal instructions for batteries in this user manual.
- ⑮ Where the mains plug or an appliance coupler is used as the disconnect device, the disconnect device shall remain readily operable.



### Warning

- Never remove the casing of this apparatus.
- Never lubricate any part of this apparatus.
- Never place this apparatus on other electrical equipment.
- Keep this apparatus away from direct sunlight, naked flames or heat.
- Ensure that you always have easy access to the power cord, plug or adaptor to disconnect this apparatus from the power.

Risk of overheating! Never install this apparatus in a confined space. Always leave a space of at least four inches around this apparatus for ventilation. Ensure curtains or other objects never cover the ventilation slots on this apparatus.

## Mains fuse

This information applies only to products with a UK mains plug.

This product is fitted with an approved molded plug. If you replace the fuse, use one with:

- the ratings shown on the plug,
- a BS 1362 approval, and
- the ASTA approval mark.

Contact your dealer if you are not sure about what type of fuse to use.

Caution: To conform with the EMC directive (2004/108/EC), do not detach the plug from the power cord.

## Notice



This product complies with the radio interference requirements of the European Community.

CE 0560 ! R&TTE Directive 1999/5/EC									
BG ✓	RO ✓	BE ✓	LT ✓	LI ✓	IS ✓	SE ✓			
DK ✓	ES ✓	CZ ✓	NL ✓	AT ✓	LV ✓	SK ✓			
FR ✓	UK ✓	FI ✓	PT ✓	CY ✓	MT ✓	PL ✓			
HU ✓	NO ✓	GR ✓	SI ✓	EE ✓					
IT ✓	LU ✓	IE ✓	CH ✓	DE ✓					

The device can be operated in the EU without restrictions indoor; but cannot be operated outdoors in France in the whole of the band until further notice.

This product complies with the requirement of the 1999/5/EC directive.

## Modifications

Modifications not authorized by the manufacturer may void user's authority to operate this product.



Your product is designed and manufactured with high quality materials and components, which can be recycled and reused.



When this crossed-out wheeled bin symbol is attached to a product it means that the product is covered by the European Directive 2002/96/EC.

Please inform yourself about the local separate collection system for electrical and electronic products.

Please act according to your local rules and do not dispose of your old products with your normal household waste. Correct disposal of your old product helps to prevent potential negative consequences for the environment and human health.



Your product contains batteries covered by the European Directive 2006/66/EC, which cannot be disposed with normal household waste. Please inform yourself about the local rules on separate collection of batteries because correct disposal helps to prevent negative consequences for the environmental and human health.

## Information about the use of batteries:



### Caution

- Risk of leakage: Only use the specified type of batteries. Do not mix new and used batteries. Do not mix different brands of batteries. Observe correct polarity. Remove batteries from products that are not in use for a longer period of time. Store batteries in a dry place.
- Risk of injury: Wear gloves when handling leaking batteries. Keep batteries out of reach of children and pets.
- Risk of explosion: Do not short circuit batteries. Do not expose batteries to excessive heat. Do not throw batteries into the fire. Do not damage or disassemble batteries. Do not recharge non-rechargeable batteries.

## Environmental information

All unnecessary packaging has been omitted. We have tried to make the packaging easy to separate into three materials: cardboard (box), polystyrene foam (buffer) and polyethylene (bags, protective foam sheet.)

Your system consists of materials which can be recycled and reused if disassembled by a specialized company. Please observe the local regulations regarding the disposal of packaging materials, exhausted batteries and old equipment.

### Made for



iPod



iPhone



iPad



AirPlay

“Made for iPod,” “Made for iPhone,” and “Made for iPad” mean that an electronic accessory has been designed to connect specifically to iPod, iPhone, or iPad, respectively, and has been certified by the developer to meet Apple performance standards. Apple is not responsible for the operation of this device or its compliance with safety and regulatory standards. Please note that the use of this accessory with iPod, iPhone, or iPad may affect wireless performance.

AirPlay, iPod, and iPhone are trademarks of Apple Inc., registered in the U.S. and other countries. iPad is a trademark of Apple Inc.

## Class II equipment symbol:



CLASS II apparatus with double insulation, and no protective earth provided.



### Note

- The type plate is located on the bottom of the apparatus.

## 2 Your Entertainment System

Congratulations on your purchase, and welcome to Philips! To fully benefit from the support that Philips offers, register your product at [www.philips.com/welcome](http://www.philips.com/welcome).

If you contact Philips, you will be asked for the model and serial number of this apparatus. The model number and serial number are on the bottom of the apparatus. Write the numbers here:

Model No. \_\_\_\_\_

Serial No. \_\_\_\_\_

### Introduction

Apple AirPlay technology enables you to play your iTunes music library, hosted on a Mac, PC, iPhone, iPod touch, or iPad on any AirPlay-enabled device (for example, your AD7000W) connected to the Wi-Fi network.

With an AirPlay-enabled device (for example, your AD7000W), you can:

- stream audio from your iTunes music library to any room in your house
- choose which AirPlay-enabled devices you want to play music on (if you have more than one such devices in your house)
- stream audio to multiple AirPlay-enabled devices at the same time (from the iTunes music library on your PC/Mac only)



Tip

- Please visit [www.philips.com/welcome](http://www.philips.com/welcome) for information about more Philips AirPlay-enabled devices.

With AD7000W, you can also:

- charge your iPod/iPhone/iPad through the USB socket with an Apple USB cable (not supplied).
- play your iTunes music library on your iPod/iPhone/iPad through the USB socket directly while charging.
- play music from other audio devices through the **MP3-LINK** socket.

### What's in the box

Check and identify the contents of your package:

- Main unit (with a built-in Wi-Fi module)
- 1 x AC power adapter
- 1 x MP3 link cable
- User manual (in CD-ROM)
- Quick start guide

### What else you need

To stream audio wirelessly by AirPlay, you need:

- A Wi-Fi certified router
- A host for your iTunes music library, for example, an iPod touch/iPhone/iPad installed with iOS 4.3 (or later) or a Wi-Fi enabled PC/Mac installed with iTunes 10 (or later)

Your AD7000W should be connected to the same local network as your iTunes host device through the Wi-Fi router.

---

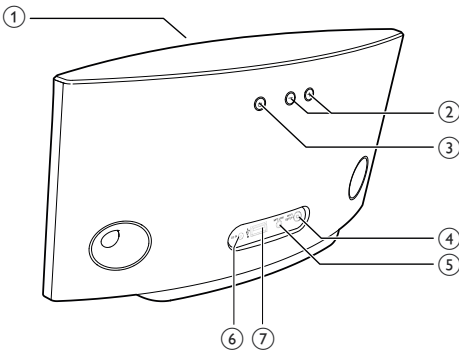
## List of compatible iTunes host devices for AirPlay

In terms of AirPlay, AD7000W is compatible with:


- a Wi-Fi enabled PC/Mac installed with iTunes 10 (or later); and
- the following iPod/iPhone/iPad models installed with iOS 4.3 (or later):
  - iPad 2
  - iPad
  - iPhone 4
  - iPhone 3GS
  - iPod touch (2nd, 3rd, and 4th generation)

---

## Overview of the main unit



- ① **Power indicator**
- ② **+/-**
  - Adjust volume.
- ③ **⏻**
  - Turn the unit on/off.
  - (Press and hold) reset the unit.
- ④ **WI-FI SETUP button/indicator**
  - Connect the unit to a Wi-Fi network.
  - Show the Wi-Fi connection status of the unit.

- ⑤ **MP3-LINK**
  - Connect an external audio player through the supplied MP3 link cable.
- ⑥ **DC IN**
  - Connect the power adaptor.
- ⑦ **USB** 
  - Connect an iPod/iPhone/iPad through an Apple USB cable (not supplied).

---

## Get started to use AirPlay

To get started with AirPlay, you need to:

- 1 Upgrade your iPod touch/iPhone/iPad to the latest iOS version (iOS 4.3 or later).
  - Or install the latest version of iTunes (iTunes 10 or later) on your PC/Mac.
- 2 Connect power to AD7000W, then turn it on (see 'Prepare' on page 9).
- 3 Connect AD7000W to your existing home Wi-Fi network (see 'Connect to your home Wi-Fi network for AirPlay' on page 10).
- 4 Make sure that your iPod touch/iPhone/iPad or PC/Mac are also connected to the same Wi-Fi network.



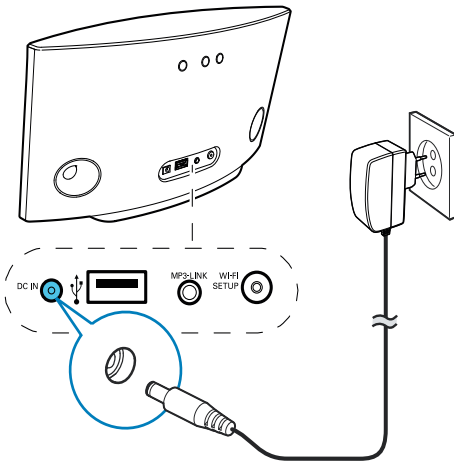
# 3 Prepare

Always follow the instructions in this chapter in sequence.

## Connect power

### ! Caution

- Risk of product damage! Make sure that the power supply voltage matches the voltage printed on the bottom of the unit.
- Risk of electric shock! When you unplug the AC adaptor, always pull the plug from the socket. Never pull the cord.
- Before you connect the AC adaptor, make sure that you have completed all the other connections.



- Connect the AC power cord to
  - the **DC IN** socket on the back of the unit.
  - the wall power socket.

## Turn AD7000W on

- 1 Press **⏻** on the back to turn the unit on.
  - 2 Wait for successful boot-up of the unit.
    - ↳ The boot-up takes about 35 seconds.
    - ↳ During boot-up, the **Wi-Fi SETUP** indicator on the back of the unit blinks green quickly.
    - ↳ After boot-up, if no Wi-Fi connection has been set up for AD7000W, the **Wi-Fi SETUP** indicator starts to blink green slowly.
- To switch the unit to Eco standby mode, press **⏻** again.
  - To switch the unit on from Eco standby mode, press **⏻** again.

## 4 Connect to your home Wi-Fi network for AirPlay



To connect AD7000W to your existing home Wi-Fi network, you need to apply your home Wi-Fi settings to AD7000W.

You can do this in two ways (depending on which type of Wi-Fi router you use):

- Automatically - if your Wi-Fi router is WPS (Wi-Fi Protected Setup)-enabled and supports PBC (Push Button Connection) (see 'Scenario 1: Connect to a WPS router' on page 10)
- Manually - if your Wi-Fi router does not support WPS (see 'Scenario 2: Connect to a non-WPS router' on page 11)

Once connected successfully, AD7000W will remember your home Wi-Fi settings. Then you can enjoy AirPlay whenever AD7000W is powered on and connected to your home Wi-Fi network automatically.

Before connection of AD7000W to your home Wi-Fi network, check the points below.

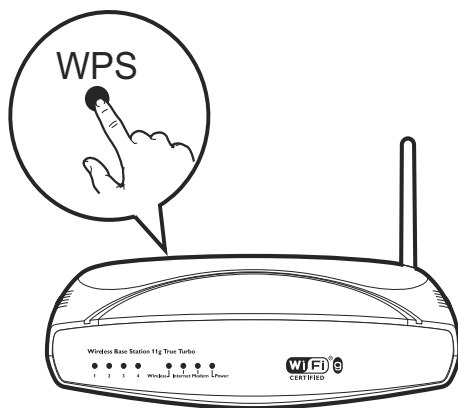
- 1 Make sure that your Wi-Fi router is powered on and working properly.
- 2 Make sure that AD7000W has been powered on and booted up successfully (see 'Turn AD7000W on' on page 9).
- 3 Identify the type of your Wi-Fi router (see the user manual of your Wi-Fi router for details).

### Scenario 1: Connect to a WPS router

#### Note

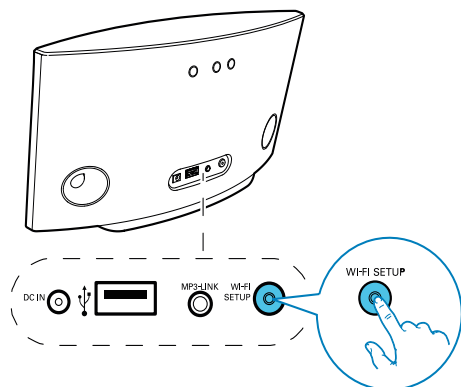
- Before you press any button on AD7000W, make sure that AD7000W has been booted up successfully (see 'Turn AD7000W on' on page 9).

- 1 Press the WPS button on your home Wi-Fi router.



- 2 Shortly after step 1, press **Wi-Fi SETUP** on the back of AD7000W.
  - ↳ The **Wi-Fi SETUP** indicator blinks red, yellow and green alternately.
  - ↳ Within 2 minutes, the **Wi-Fi SETUP** indicator stops blinking and stays green, and the unit beeps.

- ↳ AD7000W is connected to your home Wi-Fi network successfully.



### Tip

- For some Wi-Fi routers, you may need to hold the WPS button for Wi-Fi connection or enable the WPS PBC function from the router configuration pages. See the user manuals of the specific routers for details.
- If the **Wi-Fi SETUP** indicator on AD7000W blinks yellow, it means that the Wi-Fi connection has failed. Please wait for 2 minutes and try again. If the problem remains, try to set up the Wi-Fi connection manually (see 'Scenario 2: Connect to a non-WPS router' on page 11).
- If the Wi-Fi connection fails again, press and hold  $\phi$  on the back of AD7000W to reset it, and then try again.

## Scenario 2: Connect to a non-WPS router

### Note

- You can also follow the procedures below to connect AD7000W to a WPS router manually.

To connect AD7000W to a Wi-Fi router manually, you need access to AD7000W's built-in configuration web page for change of its internal Wi-Fi settings. To do so, you need a Wi-Fi enabled device with an Internet browser for temporary Wi-Fi connection to AD7000W.

The Wi-Fi enabled device can be an iPod touch/iPhone/iPad or a Wi-Fi enabled PC/Mac.

Follow the sequence below for connection of AD7000W to a non-WPS Wi-Fi router:

- 1 Collect settings of your home Wi-Fi router and write down on paper for use during AD7000W Wi-Fi setup (see 'Collect settings of your home Wi-Fi router' on page 11).
- 2 Switch AD7000W to Assisted Wi-Fi Setup mode (see 'Switch AD7000W to Assisted Wi-Fi Setup mode' on page 12).
  - ↳ A new Wi-Fi network created by AD7000W will appear, with the network name (SSID) of **Philips Fidelio AirPlay**.
- 3 Connect your Wi-Fi enabled device to the newly created Wi-Fi network temporarily (see 'Connect your Wi-Fi enabled device to the newly created Wi-Fi network' on page 12).
- 4 Open the built-in web page of AD7000W with the Internet Browser of your Wi-Fi enabled device (see 'Open the built-in web page of AD7000W' on page 14).
- 5 Change the internal Wi-Fi settings of AD7000W based on the settings you wrote on paper at step 1 (see 'Change the internal Wi-Fi settings of AD7000W' on page 15).
- 6 Restore your Wi-Fi enabled device back to your existing home Wi-Fi settings (see 'Restore your Wi-Fi enabled device back to your existing home Wi-Fi setting' on page 16).

## Collect settings of your home Wi-Fi router

### Note

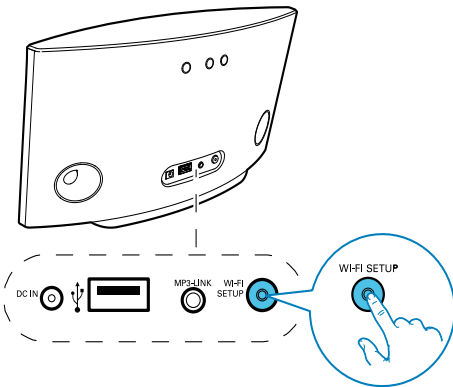
- Always consult the user manual of your home Wi-Fi router for detailed instructions.

- 1 Connect your Wi-Fi enabled device to your existing home Wi-Fi network.
- 2 Launch the Internet browser (for example, Apple Safari or Microsoft Internet Explorer) on your Wi-Fi enabled device.
- 3 Open the configuration page of your home Wi-Fi router.
- 4 Find the Wi-Fi settings tab and write down the following information on paper:
  - (A) Network name (SSID)
  - (B) Wi-Fi security mode (usually WEP, WPA or WPA2 if enabled)
  - (C) Wi-Fi password (if Wi-Fi security is enabled)
  - (D) DHCP mode (enabled or disabled)
  - (E) Static IP address settings (if DHCP mode is disabled)

## Switch AD7000W to Assisted Wi-Fi Setup mode

### Note

- Before you press any button on AD7000W, make sure that AD7000W has been booted up successfully (see "Turn AD7000W on" on page 9).



- Press and hold **Wi-Fi SETUP** on the back of AD7000W for more than 5 seconds.
  - ↳ The **Wi-Fi SETUP** indicator blinks green and yellow alternately.
  - ↳ A new Wi-Fi network created by AD7000W will appear, with the network name (SSID) of **Philips Fidelio AirPlay**.
  - ↳ It may take up to 45 seconds for successful creation of this new Wi-Fi network.

### Note

- After you finish manual Wi-Fi setup for AD7000W, the new Wi-Fi network created by AD7000W will disappear.
- If you fail to enter Assisted Wi-Fi Setup mode, power off AD7000W and power on it, then try again after successful boot-up.
- Make sure that there are no other Philips AirPlay-enabled devices in Assisted Wi-Fi Setup mode at the same time. Multiple Wi-Fi networks created this way may interfere with each other.

## Connect your Wi-Fi enabled device to the newly created Wi-Fi network

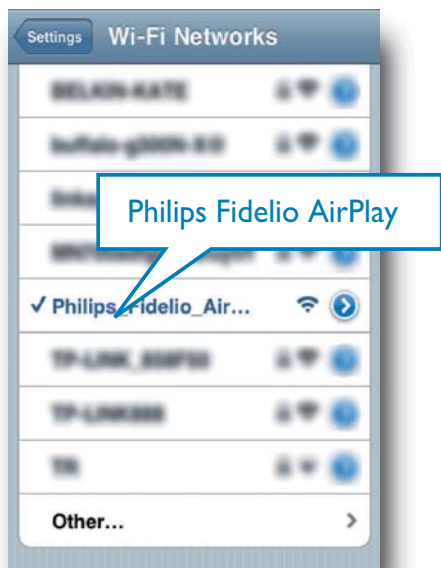
The new Wi-Fi network created by AD7000W only allows access of one Wi-Fi enabled device. To avoid interference from any other Wi-Fi devices, you are recommended to temporarily disable the Wi-Fi function on your other Wi-Fi devices.


### Option 1: Use your iPod touch/iPhone/iPad

- 1 Select **Settings** -> **Wi-Fi** on your iPod touch/iPhone/iPad.



- 2 Select Philips Fidelio AirPlay from the list of available networks.



- 3 Wait until successful Wi-Fi connection on your iPod touch/iPhone/iPad.  
↳  is displayed at the upper left corner of your iPod touch/iPhone/iPad.

#### Tip

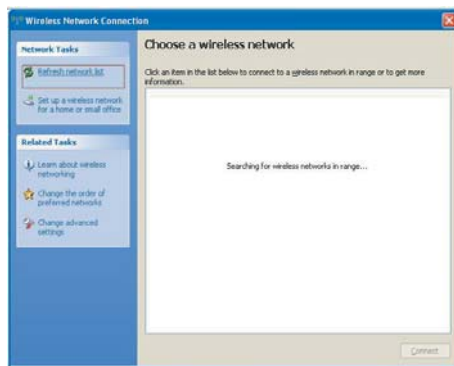
- If Philips Fidelio AirPlay is not in the list, try to scan the available Wi-Fi networks again.

#### Use your Wi-Fi enabled PC/Mac

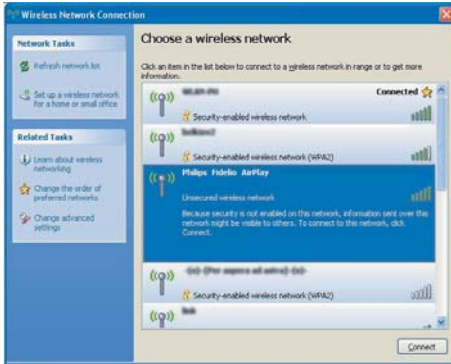
#### Note

- See the user manual of your PC/Mac for how to connect your PC/Mac to a Wi-Fi network.
- During Wi-Fi network connection, do not connect any network cable to your PC/Mac.

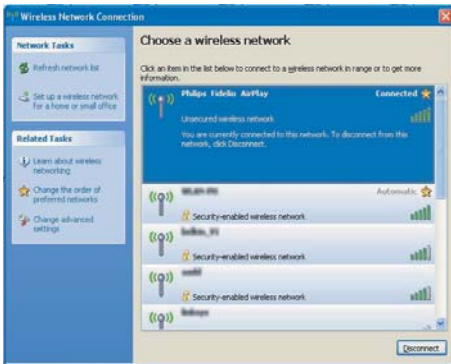
- 1 Open the Wi-Fi setup tool or control panel on your PC/Mac.
- 2 Scan the available Wi-Fi networks.



- 3 Select Philips Fidelio AirPlay from the list of available networks.



4 Wait until successful Wi-Fi connection on your PC/Mac.



Tip


- If Philips Fidelio AirPlay is not in the list, try to scan the available Wi-Fi networks again.

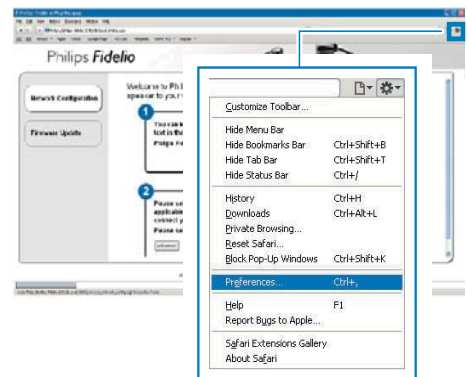
## Open the built-in web page of AD7000W

- 1 Launch Apple **Safari** browser or any other Internet browser on your Wi-Fi enabled device.
- 2 Type in **192.168.1.1** at the browser address bar and confirm.
  - ↳ The AD7000W configuration web page is displayed.

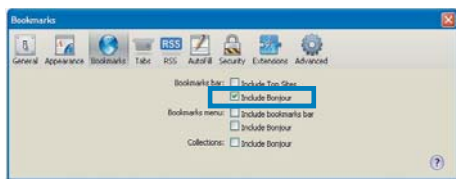


If you use Safari on your Wi-Fi enabled PC/ Mac, you can also select 'Philips\_Fidelio XXX' from the Bonjour pull-down list to enter the AD7000W configuration web page directly.

- 1 Click  -> Preferences.
  - ↳ The Bookmarks menu is displayed.

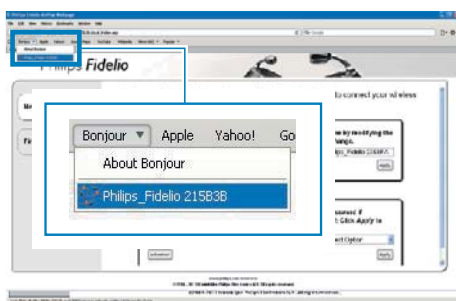


## 2 Tick Include Bonjour for Bookmarks bar.



## 3 Select 'Philips\_Fidelio XXX' from the Bonjour pull-down list shown at the bookmarks bar.

↳ The AD7000W configuration web page is displayed.



## Change the internal Wi-Fi settings of AD7000W

On the AD7000W configuration web page, you can change the internal Wi-Fi settings of AD7000W for connection of AD7000W to your existing home Wi-Fi network.

### Note

- Make sure that the settings on the configuration web page match your home Wi-Fi network settings that you wrote on paper.



- Follow the on-screen instructions to change and confirm the internal Wi-Fi settings of AD7000W.
  - ↳ After a while, the indicator on the back of AD7000W stops blinking and stays green, and the unit beeps.
  - ↳ AD7000W is connected to your existing home Wi-Fi network successfully.

### Note

- If the **WI-FI SETUP** indicator on AD7000W does not stay green steadily, it means that the Wi-Fi connection has failed. Please power off both your Wi-Fi router and AD7000W and then power on them again to see whether AD7000W can be connected to your home Wi-Fi network. If the problem remains, try the above procedures again.
- After you finish the above changes or power-off and power-on of AD7000W, the new Wi-Fi network created by AD7000W will disappear.

### Tip

- If you like, you can change the name of your AD7000W in **Advanced settings** -> **AirPlay Device Name** on the AD7000W configuration web page. This is helpful when you have multiple Philips AirPlay-enabled devices in your house and you need to distinguish between them.
- If you want to enter the network name (SSID) manually (for example, if you want to hide your SSID), go to **Advanced settings** -> **CONFIGURE MANUALLY** on the AD7000W configuration web page.

## Restore your Wi-Fi enabled device back to your existing home Wi-Fi setting

### Note

- Make sure that the settings at steps 2 to 3 below match your home Wi-Fi network settings you wrote on paper.

- 1 Select **Settings** -> **Wi-Fi** on your iPod touch/iPhone/iPad.
  - Or open the list of available Wi-Fi networks on your PC/Mac.



- 2 Select your network name (SSID) from the list of available wireless networks.



- 3 Enter the network key if required.
- 4 Wait until successful Wi-Fi connection to your home Wi-Fi network.



# 5 Play

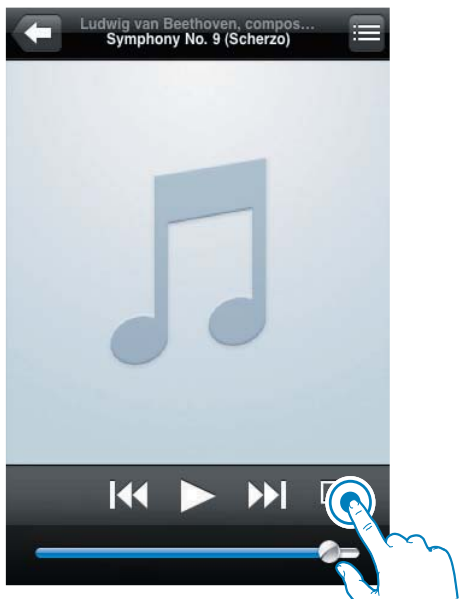
## Stream audio from your iTunes music library to AD7000W

### Note

- Make sure that your iTunes host device is connected to the same Wi-Fi network as AD7000W. Your iTunes device can be an iPod touch/iPhone/iPad installed with iOS 4.3 (or later) or a Wi-Fi enabled PC/Mac installed with iTunes 10 (or later).

## Stream from your iPod touch/iPhone/iPad

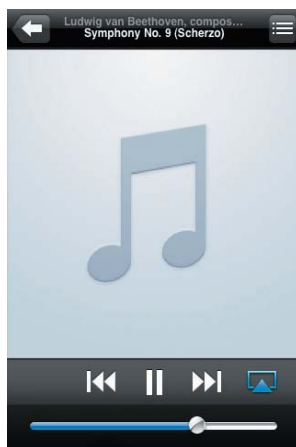
- 1 Launch the **iPod** application on your iPod touch/iPhone/iPad.
- 2 Tap on the AirPlay icon.



- 3 Select **Philips\_Fidelio XXXX** (or user customized name) from the AirPlay list.



- 4 Select a media file and start play.  
↳ After a while, you will hear music from AD7000W.

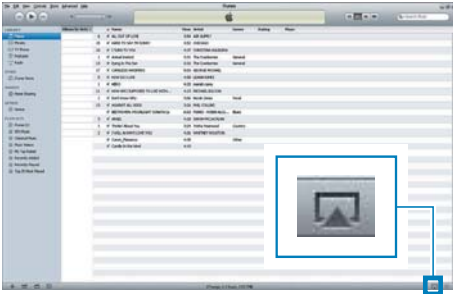


### Note

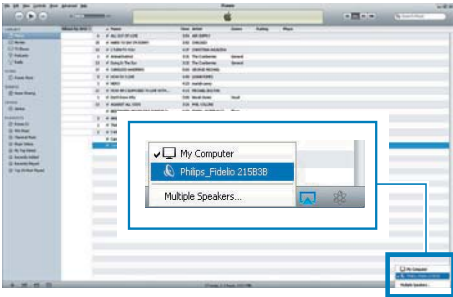
- If you fail to hear music after successful setup, do one of the following on your iPod touch/iPhone/iPad:
- (1) Disconnect and then re-connect to the same Wi-Fi router again;
- (2) Close all applications running at the background;
- (3) Power off and then power on your iPod touch/iPhone/iPad again.

## Stream from your PC/Mac

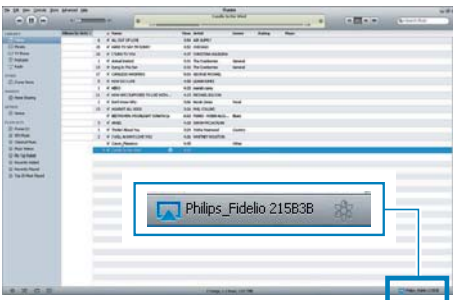
- 1 Launch iTunes 10 (or a later version) on your PC/Mac.
- 2 Click the AirPlay icon on the window.





- 3 Select **Philips\_Fidelio\_AirPlay XXXX** (or user customized name) from the AirPlay list.



- 4 Select a media file and start play.  
↳ After a while, you will hear music from AD7000W.



## Tip

- When you stream audio from your iTunes music library on a PC/Mac, you can select more than one AirPlay-enabled devices (if available) at step 3 to stream music to all of them at the same time.
- If you are using an earlier version of iTunes, the AirPlay icon may be  instead of .

## Control play

You can select different play options from either your iTunes host device or AD7000W.

## Note

- Make sure that you have successfully streamed audio from your iTunes music library to AD7000W.
- To pause or resume play, press **▶||**.
- To adjust volume, press **+/-** repeatedly.

## Tip

- If you are streaming music from a PC/Mac, to control music play from AD7000W, remember to tick **Allow iTunes audio control from remote speakers** in **Edit -> Preferences -> Devices** on iTunes.

## Use advanced sound settings

If your iTunes host device is an iPod touch/iPhone/iPad:

For advanced sound settings and additional features, you can use your iPod touch/iPhone/iPad to download the **Philips Fidelio** application from Apple App Store. It is a free application from Philips.

If your iTunes host device is a Wi-Fi enabled PC/Mac:

For advanced sound settings, you can use the equalizer available on iTunes directly (**View -> Show Equalizer**).

## Tip

- See the iTunes help documentation for more details.

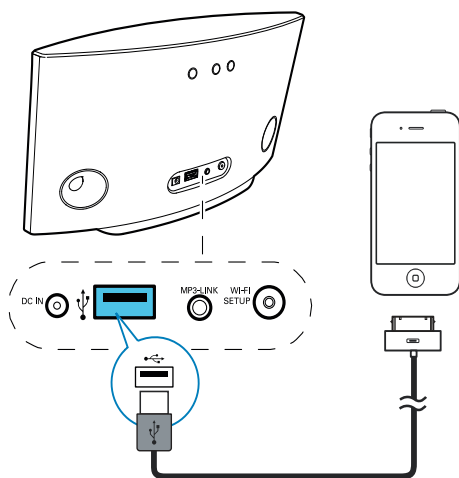
## Play/charge your iPod/iPhone/iPad through USB socket

### Note

- The USB socket is only compatible with iPod/iPhone/iPad.

You can play or charge your iPod/iPhone/iPad through the USB socket with an Apple USB cable (not supplied).

If you have stopped audio streaming by AirPlay, after successful USB connection, the unit switches to the USB source automatically.



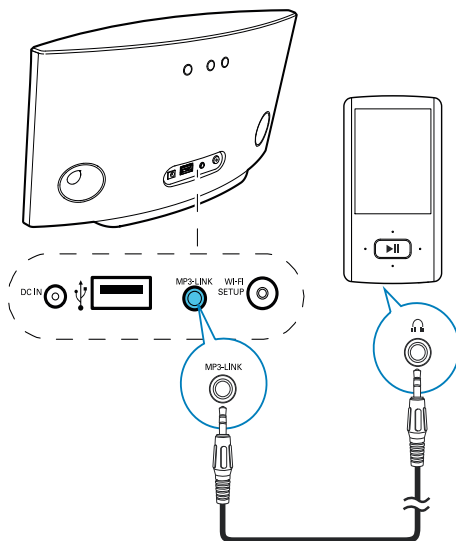
- Connect an Apple USB cable (not supplied) to:
  - the **USB** socket on the back of AD7000V.
  - the dock connector on your iPod/iPhone/iPad.

- iPhone 3GS
- iPhone 3G
- iPhone
- iPod classic
- iPod 5G
- iPod 4G
- iPod nano (2nd, 3rd, 4th, 5th, and 6th generation)
- iPod touch (1st, 2nd, 3rd, and 4th generation)

## Play from an external device

You can also listen to an external audio player through the unit.

If you have stopped both audio streaming by AirPlay and play through the USB socket, the unit switches to the MP3 link source automatically.



- Connect the supplied MP3 link cable to:
  - the **MP3-LINK** socket on the back of the unit.
  - the headphone jack on an external audio player.

## Compatible iPod/iPhone/iPad

The USB socket supports play and charge of the following iPod, iPhone, and iPad models.

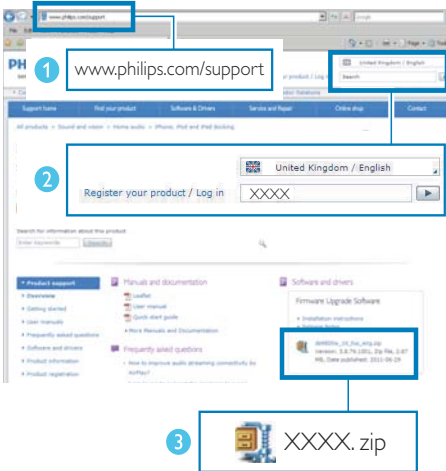
- iPad 2
- iPad
- iPhone 4

# 6 Update firmware

## Note

- You can only update the firmware from a PC/Mac.

## Download the update file



- 1 On your PC/Mac, go to [www.philips.com/support](http://www.philips.com/support).
- 2 Enter the model number to find the latest firmware upgrade file available.
- 3 Save the upgrade file to your hard drive.

## Update from the configuration page

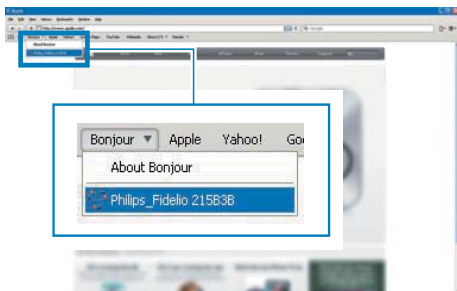
### Warning

- Always connect your AD7000W to AC power for firmware upgrade. Never power off your AD7000W during firmware upgrade.

## Note

- To use an Internet browser other than Apple Safari on your PC/Mac, remember to go to the Wi-Fi router configuration page and write down the IP address of your AD7000W. See the user manual of your Wi-Fi router for how to find the IP addresses of devices connected to the Wi-Fi router.

- 1 Power on AD7000W (see 'Turn AD7000W on' on page 9).
  - ↳ It takes about 35 seconds for the unit to boot up. During boot-up, the **WI-FI SETUP** indicator on the back of the unit blinks green quickly.
  - ↳ After boot-up, you can hear a beep and the **WI-FI SETUP** indicator turns to green steadily. AD7000W is connected to the last configured Wi-Fi network automatically.
- 2 Make sure that AD7000W and your PC/Mac are connected to the same Wi-Fi router.
- 3 Open Apple **Safari** on your PC/Mac, then select 'Philips\_Fidelio XXXX' from the Bonjour pull-down list.
  - Or open any other Internet browser on your PC/Mac, then type in the IP address of AD7000W (available on the Wi-Fi router configuration page) at the address bar.
    - ↳ The AD7000W configuration web page is displayed.



- 4 Follow the on-screen instructions to complete the firmware update.

### Note

- In case the firmware update fails, you can try the above procedures again.
- After successful firmware update, if there is any problem with the Wi-Fi connection, press and hold  $\odot$  on AD7000W for more than 5 seconds to reset the device, and then try to set up the Wi-Fi network for AD7000W again (see 'Connect to your home Wi-Fi network for AirPlay' on page 10).

# 7 Product information



## Note

- Product information is subject to change without prior notice.

## Specifications

### Amplifier

Rated Output Power	2 X 5 W RMS
Frequency Response	63 Hz - 18 kHz, $\pm 3$ dB
Signal to Noise Ratio	> 90 dB
MP3 Link	600 mV RMS 20 kohm

### Speakers

Speaker Impedance	8 ohm
Speaker Driver	66 mm full range
Sensitivity	82 dB/m/W

### Wireless

Wireless standard	802.11b/g
Wireless security	WEP (64 or 128 bit), WPA/WPA2 (8-63 characters)
Frequency range	2412 - 2462 MHz (CH1-CH11) (for /79, /37, /55, /97) 2412 - 2472 MHz (CH1-CH13) (for /12, /10, /05)
PBC (one button push)	Yes

### General information

AC power	Input: 100 - 240 V~, 50/60 Hz 1A/1.2 A Output: 12 V === 3.0 A
Operation Power Consumption	25 W
Power Consumption in Standby Mode	< 0.5 W
Dimensions	- Main Unit (L x W x H) 298 x 98 x 168 mm
Weight	- With Packing 2.02 kg - Main Unit 1.36 kg

# 8 Troubleshooting



## Warning

- Never remove the casing of this apparatus.

To keep the warranty valid, never try to repair the system yourself.

If you encounter problems when using this apparatus, check the following points before requesting service. If the problem remains unsolved, go to the Philips web site ([www.philips.com/welcome](http://www.philips.com/welcome)). When you contact Philips, ensure that the apparatus is nearby and the model number and serial number are available.


### No power

- Make sure that the AC power plug of the device is connected properly.
- Make sure that there is power at the AC outlet.

### No sound

- Adjust the volume.
- Check the Wi-Fi network connection. Set up the network again if needed (see 'Connect to your home Wi-Fi network for AirPlay' on page 10).

### No response from the unit

- Press and hold  on AD7000W for more than 5 seconds to reset the device. Then set up the Wi-Fi network for AD7000W again (see 'Connect to your home Wi-Fi network for AirPlay' on page 10).
- Disconnect and reconnect the AC power plug, and then switch on the device again.

### Wi-Fi network connection failed

- Check if your Wi-Fi router is Wi-Fi 802.11b/g certified. This device is only compatible with Wi-Fi 802.11b/g certified routers.
- If your Wi-Fi router is Wi-Fi 802.11n certified, make sure to enable the 802.11b/g mode. AD7000W does not support connection to routers with 802.11n only.
- This device does not support the WPS-PIN method.
- If your Wi-Fi router supports WPS and the WPS-PBC method but fails to connect to AD7000W, try the manual Wi-Fi setup method (see 'Scenario 2: Connect to a non-WPS router' on page 11).
- Enable SSID broadcast on the Wi-Fi router.
- Keep away from potential sources of interference which may affect Wi-Fi signal, such as microwave ovens.
- If you fail to use your PC for Wi-Fi network setup, check whether your PC is using a Wi-Fi network. You cannot use Ethernet connection for AirPlay network setup.
- Make sure that the SSID name of your home router consists of alphanumeric characters, with no space or special characters like %/#/\* inserted.
- If you choose to rename the AirPlay device '**Philips\_Fidelio XXXX**' in the setting menu, do not use special characters or symbols.
- For some new types of Wi-Fi routers, a network name (SSID) may be created automatically when you use WPS for connection. Always change the default network name (SSID) to a simple one that consists of alphanumeric characters, and also change the Wi-Fi security mode to secure your network.

## Occasional breaking of AirPlay music streaming

Do one or all of the following:

- Move AD7000W closer to your Wi-Fi router.
- Remove any obstacles between AD7000W and your Wi-Fi router.
- Avoid using Wi-Fi channel which is overlapped by the nearby Wi-Fi network.
- Check if your network speed is fast enough (in cases where multiple devices share the same router, the AirPlay performance may be affected). Turn off the other devices connected to your home router.
- Enable the Quality of Service (QoS) option (if available on the Wi-Fi router).
- Turn off other Wi-Fi routers.

## No AirPlay icon on my iTunes host device

- Make sure that AD7000W is already connected to your home Wi-Fi network.
- Before you open iTunes, make sure that you have enabled Bonjour service in your PC. Take Windows XP for example: to enable the service, you can click **Start->Control Panel**, and double-click **Administrative Tools-> Services->Bonjour Service**, then click **Start** followed by **OK** on the pop-up menu.
- If the problem remains, try to restart AD7000W.

## AirPlay connection failed with Mac or PC

- Temporarily disable the firewall and security software to see whether it blocks the ports that AirPlay uses to stream content. See the help documentation of your firewall and security software on how to unblock the ports used by AirPlay.
- When you use iPod Touch/iPhone/iPad/Mac/PC for AirPlay, if the music play breaks or stops, try to restart your iPod Touch/iPhone/iPad, iTunes or AD7000W.
- Video streaming or FTP downloads may overload your router and therefore may cause interruptions during AirPlay music play. Try to reduce the load of your router.





